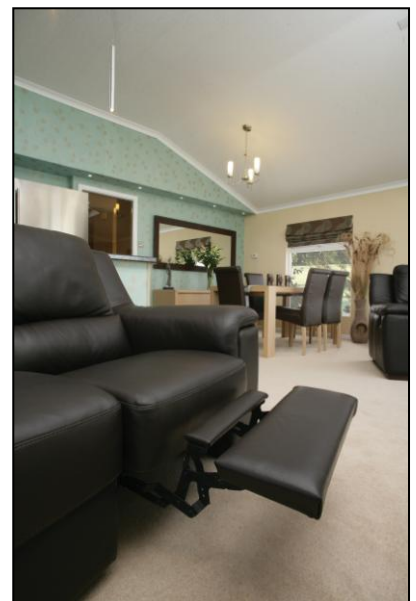


Oakmere Lodge

COUNTRY PARK



2008 Lissett Utopia 2 45'x22'



*3 bedroom lodge, ready for immediate occupation,
including all fittings and furnishings.
Price on application.*

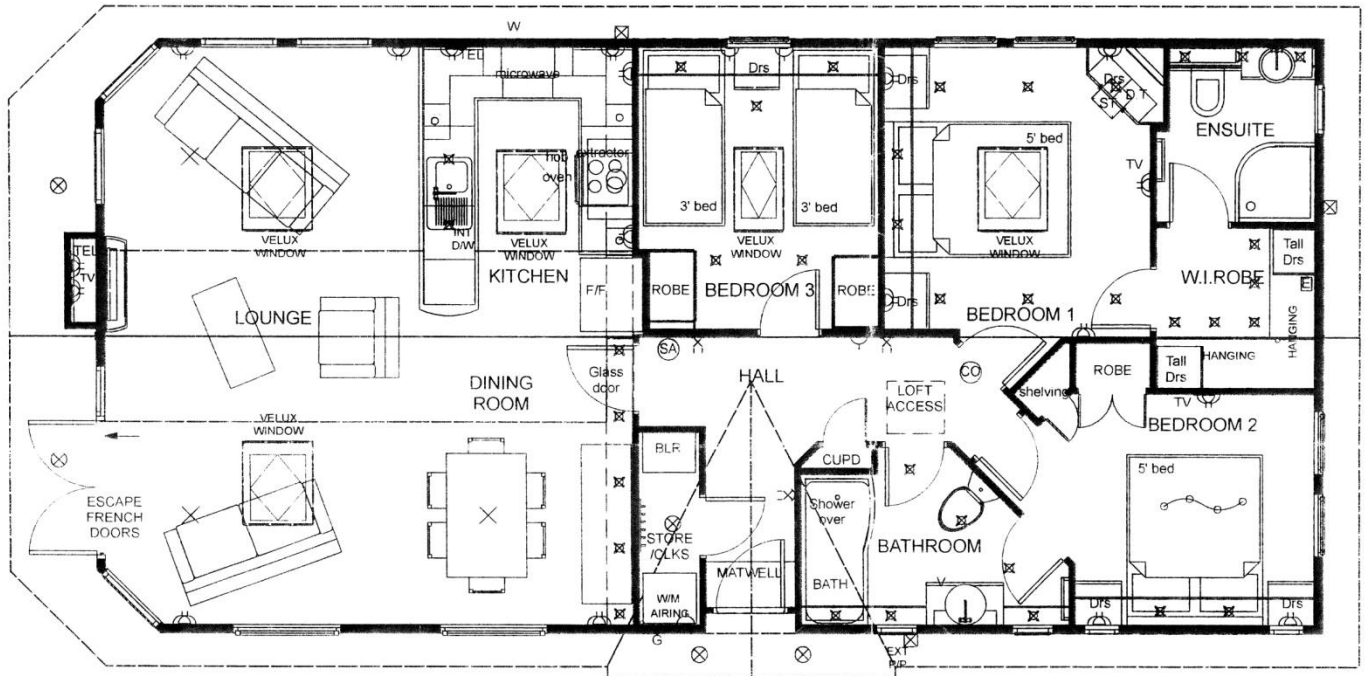




Oakmere Lodge

COUNTRY PARK

2008 Lissett Utopia 2 45'x22'



3 bedroom lodge, ready for immediate occupation,
including all fittings and furnishings.
Price on application.

- French doors with access to decking, outdoor lights
- Canaxel exterior cladding
- UPVC Fascias
- Built under oven
- Free standing fridge freezer and ice maker
- Built in Microwave
- Astracast sink and accessory pack
- Stainless Steel kitchen extractor vented to the outside
- Two carousels in kitchen cupboards
- Matching splash back in the kitchen
- Callagaris Italian dining furniture
- Mains supply shower over bath
- Harlequin fabrics and wall papers
- Automatic Velux windows with blinds
- Rain sensors fitted to all Velux windows
- 70mm Kingspan cool Therm Insulation throughout
- Chimney breast and recess for flat screen tv
- Burley Hambleton fire with remote control
- Free standing Washer/dryer
- Upgraded bathroom furniture
- Upgraded lighting to kitchen and under locker lighting
- Upgraded hall lighting
- Koto doors and furniture
- 80/20 wool based carpet
- Energy efficient LED's and lighting.

- New style 22' wide lodge
- Condensing Combi boiler with 50l on demand hot water storage.
- Wet under floor heating in lieu of radiators
- Upgraded en-suite to shower wet room with electric under floor heating.
- Reclining leather furniture upgrade
- Soft furnishings included throughout
- 400^{sq} ft of quality timber decking
- Close boarded skirting to match the exterior
- Fitted burglar alarm with rear security light
- Flat screen LCD Tv
- Integrated dishwasher
- Walk in Wardrobe in En-suite
- Chrome heated towel rails in bathrooms
- TV points in all bedrooms
- Loft access
- Recessed floor mat in hall
- Exterior plug socket
- Remote controls for entrance gates
- Parking for two cars

Company No. 112671C

